



## UNDER OFFER - NO FURTHER INSPECTIONS

The property is located at the corner of Dunning Avenue and Morley Avenue. It is strategically located only 6km from the Sydney CBD, 3km from Sydney Airport and a 15 minute walk to Green Square Station. It is surrounded by local amenity - most notably 'The Cannery' located next door which houses the Three Blue Ducks, The Saporium & Zeus Street Greek.

This 61 sqm creative suite features:

- High ceilings
- Great natural light
- Polished concrete floors
- Toilets and showers in the unit
- Full kitchenette
- Storage
- NO car parking on site
- Great space for a showroom or a creative office user

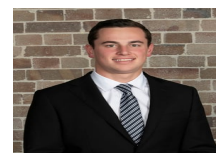
Under Offer - No Further Inspections

### Price

Contact Agent

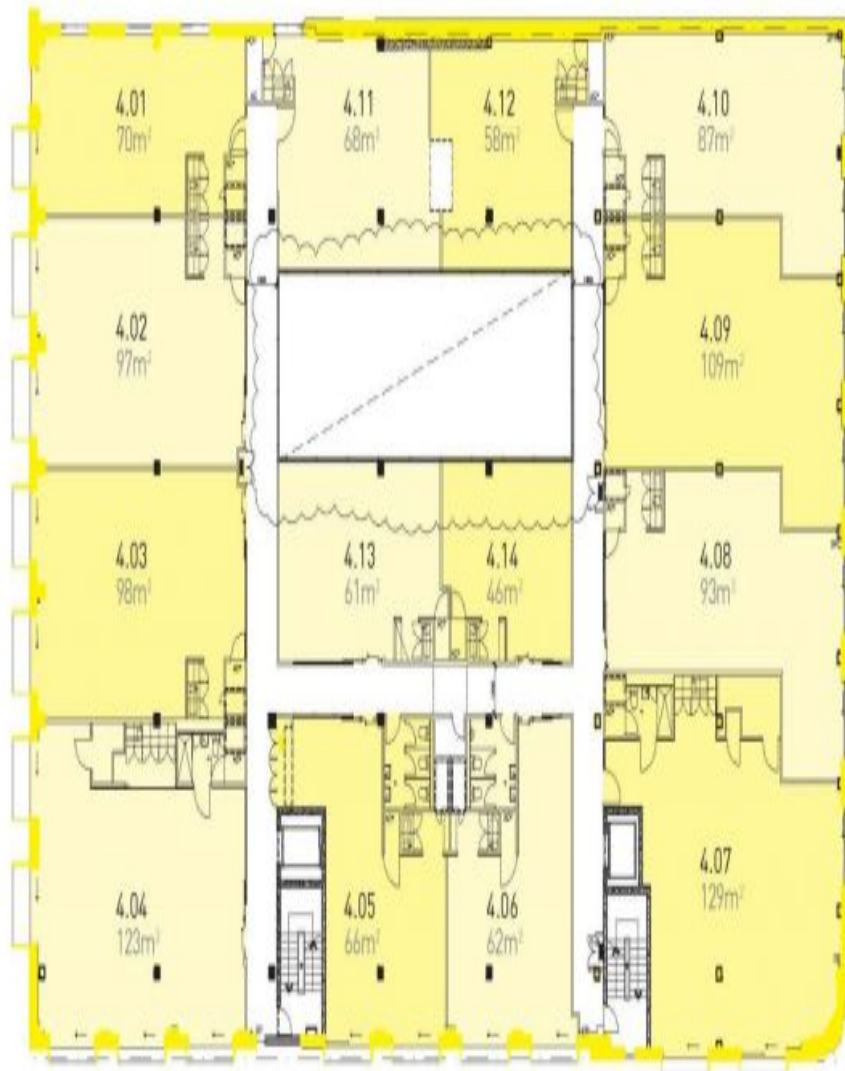
### Property Details

Type	Commercial
Property Type	Offices
Area	61m2



Jackson Deans-Harvey  
P : 0449 877 100  
M : 0449 877 100  
E : [jackson@deansproperty.com.au](mailto:jackson@deansproperty.com.au)





MORLEY AVENUE

DUNNING AVENUE

1 Not to scale

2 Areas quoted do not include balconies

Plans shown are only indicative of layout. Dimensions are approximate.

Fourth Floor



**Rosebery, NSW**  
4.13/77 DUNNING AVENUE