

AVAILABLE NOW - EXCELLENT OFFICE SUITE IN THE ICONIC 'COOPERAGE' BUILDING !

Located in one of Sydney's thriving city-fringe precincts, the office suite is set within the iconic 'Cooperage' building, and features a spacious open-plan design, high ceilings and exposed timber beams and trusses.

Features include:

- 78 sqm including a 16 sqm mezzanine
- Unbelievable 4th floor East facing boutique designer office
- Exposed beams with ducted air conditioning throughout
- Great natural light with function able windows
- Access to the common amenities and kitchen on the floor
- Access to on site swimming pool
- Tranquil location with delightful Sydney City Skyline & park views
- Car space available at extra cost - plus lots of street parking
- Available now

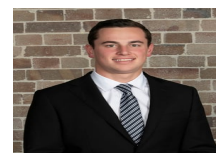
Very rarely to creative offices of this nature become available with such additional lifestyle options!

Price

Contact Agent

Property Details

Type	Commercial
Property Type	Offices
Area	78m2



Jackson Deans-Harvey
P : 0449 877 100
M : 0449 877 100
E : jackson@deansproperty.com.au

