

## WELL PRESENTED GROUND SUITE - RECENTLY REFURBISHED!

Deans Property is proud to offer this Versatile Ground Floor Workspace in Camperdown. Within a close proximity to Sydney University, RPA Hospital & located just off bustling Parramatta Road, this neatly tucked away suite has just undergone a total refurbishment offering polished concrete floors & new partitioned offices, perfect for consulting, creative's, entrepreneurial or maker space businesses.

Ability to lease the floor to one tenant, or individual rooms, enquire for further information !

Features include:

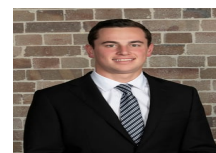
- New interior loaded with well-being features
- Exceptional natural light and ventilation
- Full internal kitchen with matt black finish
- NW aspect with direct indoor sunlight
- Fibre broadband, nominal maximum download/upload 100/40 speed
- Ducted air-conditioning
- Flexible leasing terms, ideal for start ups (minimum 1 year lease)

### Price

\$50,000 Per Annum Gross + GST

### Property Details

|               |            |
|---------------|------------|
| Type          | Commercial |
| Property Type | Offices    |
| Area          | 88.8m2     |



Jackson Deans-Harvey

P : 0449 877 100

M : 0449 877 100

E : [jackson@deansproperty.com.au](mailto:jackson@deansproperty.com.au)

