

## PRIME OFFICE LOCATION IN SYDNEY CBD!

International House is situated at the corner of Pitt Street near QVB, Hyde Park & World Square comprising 2 merged office buildings built circa. 1925, 7 levels of office space and NAB, Flight Centre & Subway at street level. The building offers excellent value for tenants in the CBD's midtown precinct.

Features include:

- Executive office in place and full kitchen
- Air conditioning
- Ideal for legal users

Owners are unable to accept any of the following:

- Student services
- Immigration services
- Education related services
- Massage or related services

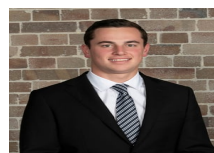
For more information or to inspect this property, feel free to give Deans

### Price

Contact Agent

### Property Details

Type	Commercial
Property Type	Offices
Area	120m2



Jackson Deans-Harvey  
P : 0449 877 100  
M : 0449 877 100  
E : [jackson@deansproperty.com.au](mailto:jackson@deansproperty.com.au)



Boe Saysouthinh  
P : 0425 484 222  
M : 0425 484 222  
E : [bsaysouthinh@deansproperty.com.au](mailto:bsaysouthinh@deansproperty.com.au)

