

VERSATILE SALE OFFERING - EXCELLENT EXPOSURE

Located seconds from Parramatta Road, this multi-purpose workspace is a rare offering ideal for both owner occupiers and investors. This versatile strata opportunity is currently tenanted to "Freddy's Cafe" and a brochure distribution agency. The complex offers a communal rear lane access point, ideal for warehouse and truck access direct to the suite.

Features include:

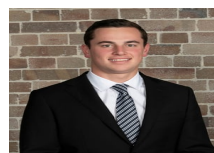
- Ground floor cafe with direct street access
- Annual return of \$115,000 Nett + GST over 2 tenancies
- Tenants pay 100% of outgoings
- Easily sub-divided or combined (STCA)
- High clearance warehouse with easy truck / delivery access
- Exclusive kitchen and bathroom amenities with shower
- 4 undercover car spaces on title
- Short distance to street parking, bus stops and Stanmore Railway Station
- Easy access to major traffic routes including Parramatta Road, Broadway, Pyrmont Bridge Road, City Road, City West Link and M4 Motorway
- Proximity to Sydney CBD, Sydney University, RPA Hospital, Darling

Price

Contact Agent

Property Details

Type	Commercial
Property Type	Industrial
Area	336m2



Jackson Deans-Harvey
P : 0449 877 100
M : 0449 877 100
E : jackson@deansproperty.com.au

