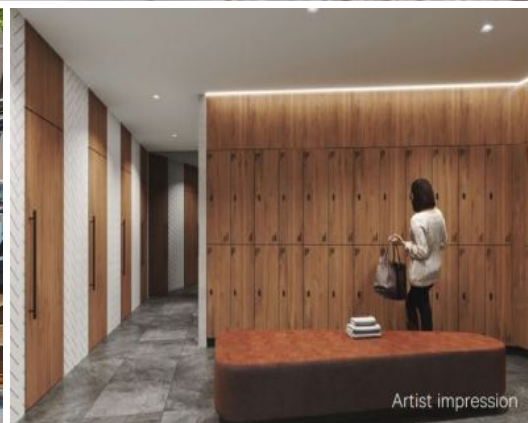




Artist impression



Artist impression



Artist impression

**PART GROUND FLOOR - ADJACENT TO PYRMONT LIGHT RAIL STATION**

Bay Centre is an A Grade office development boasting prominent location in Pyrmont Bay. The space offers part of Level 1 with exceptional natural light and views across Pyrmont Bay Park. The Ground floor foyer has been extensively refurbished with a high quality foyer cafe plus brand new end of trip facilities located on Basement level 1.

481 sqm - Ground Floor - Suit office and retail. Spec suites being built. High visibility to Pirrama Road and Star City.

256 sqm - Part Ground floor - Spec suite being built to provide Reception/waiting, Boardroom, meeting room, kitchen/breakout, comms/IT and 24 workstations.

185 sqm - Part Ground floor - Spec suite being built to provided Reception/waiting boardroom, meeting room, kitchen breakout and 18 workstations.

Neighbouring tenants include Google, Accenture, American Express,

**Price**

\$172,800 pa pa

**Property Details**

Type	Commercial
Property Type	Healthcare
Area	256m2



Jackson Deans-Harvey  
 P : 9282 6777  
 M : 0449 877 100  
 E : jackson@deansproperty.com.au

