



BOUTIQUE CREATIVE OFFERING WITH PRIVATE ROOFTOP TERRACE

Prominently located on a corner block just off Bustling Oxford Street, this rare inner-city pad is back on the market for lease. Retaining the original features of a terrace house and a modern day creative office, this exclusive offering comes partially fitted and offers a huge private rooftop terrace. Here you can relax in blissful seclusion and know that all of Crown Street's cafes, boutiques, wine bars and transport options are literally footsteps from the front door.

Features Include:

- Stunning North facing rooftop deck with views of the CBD and Sydney Harbour Bridge
- Quality existing fit-out may be retained via negotiation
- Boutique terrace style office
- Male & Female amenities with shower
- Close to Oxford Street, Hyde Park, St James Station, and East Sydney restaurants

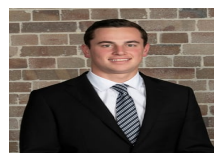
For any more information or to inspect this property, feel free to give

Price

Contact Agent

Property Details

Type	Commercial
Property Type	Healthcare
Area	147m2



Jackson Deans-Harvey
P : 0449 877 100
M : 0449 877 100
E : jackson@deansproperty.com.au

