

MULTIPLE OFFERINGS IN SYDNEY'S NEXT CREATIVE HEADQUARTERS

Welcome to the Locomotive Workshops in South Eveleigh, Sydney's newest community precinct bustling with a range of creative office space, high end catering and dining hospitality venues. Originally built back in the 1880s, this adaptive re-use and refurbishment is one of Sydney's best heritage warehouse conversions, offering over 25,000 sqm of office, retail, F&B, health, and wellness opportunities.

Work Club Locomotive consists of high-end professional workspaces, offering turnkey fit-out offerings suitable for a diverse range of business. Work Club Locomotive is a membership-based, boutique professional workspace meticulously designed for leaders, innovators, and corporate creatives seeking an all-inclusive high-end work and lifestyle space. Designed to house 3200 sqm of curated office space, state of the art meeting and conference facilities, licenced bar and break out space.

Features include:

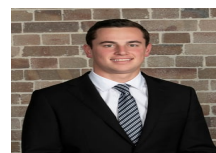
- Turn Key Creative offering in 200 year old refurbished locomotive workshop

Price

Contact Agent

Property Details

Type	Commercial
Property Type	Offices
Area	3200m2



Jackson Deans-Harvey
P : 0449 877 100
M : 0449 877 100
E : jackson@deansproperty.com.au



DEANS
PROPERTY