

FLOURISHING BOUTIQUE WORKSPACES - PRECINCT SOUTH EVELEIGH

Work Club Locomotive provides high-end professional workspaces, with turnkey fit-out offerings suitable for a diverse range of businesses. Work Club Locomotive is a luxury, boutique workspace meticulously designed for leaders, innovators, and corporate creatives seeking an all-inclusive, premium work and lifestyle space.

Features include:

- Recently refurbished private office spaces ranging from 100 - 300 sqm
- Turnkey creative offering in 200-year-old refurbished locomotive workshop
- All-inclusive flexible working arrangements including all workstations and chairs
- Fully-licensed club lounge bar perfect for client meetings and breakout
- Soundproof meeting, boardrooms and call booths throughout, included to book at no cost
- Cathedral high ceilings with central void complete with skylights

We are currently leasing larger tenancies for 14-24 person teams, this could include larger teams adopting a hybrid (WFH) model, whilst still requiring a physical office space.

South Eveleigh, Sydney's newest community precinct bustling with a range of creative office space, high end catering and dining hospitality venues. Originally built back in the 1880s, this adaptive re-use and refurbishment is one of Sydney's best heritage warehouse conversions,

Price

Contact Agent

Property Details

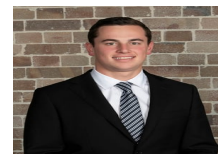
Type	Commercial
Property Type	Offices
Area	100m2

offering over 25,000 sqm of office, retail, F&B, health & wellness opportunities.

Precinct Eveleigh is saturated with amenities with access to a large scale IGA, multi-functional gym, on-site brewery and restaurant Brewdog. For more information on local restaurants in the area, check out their website - <https://www.southeveleigh.com/>

For more information or to inspect this property, feel free to give Deans Property a call today!

For more property matches, visit www.deansproperty.com.au



Jackson Deans-Harvey
P : 0449 877 100
M : 0449 877 100
E : jackson@deansproperty.com.au

