

PRIME OFFICE LOCATION IN SYDNEY CBD !

International House is situated at the corner of Pitt Street near QVB, Hyde Park & World Square comprising 2 merged office buildings built circa. 1925, 7 levels of office space and NAB, Flight Centre & Subway at street level. The building offers excellent value for tenants in the CBD's midtown precinct.

Features include:

- 43 sqm office space
- Executive office in place and full kitchen
- Ideal for legal users

Owners are unable to accept any of the following:

- Student services
- Immigration services
- Education related services
- Massage or related services

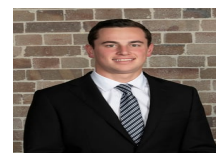
For more information or to inspect this property, feel free to give Deans

Price

Contact Agent

Property Details

Type	Commercial
Property Type	Offices
Area	43m2



Jackson Deans-Harvey
P : 0449 877 100
M : 0449 877 100
E : jackson@deansproperty.com.au



Boe Saysouthinh
P : 0425 484 222
M : 0425 484 222
E : bsaysouthinh@deansproperty.com.au

