



FITTED OR REFURBISHED OFFICE SUITES FOR LEASE FROM 72 SQM UP TO WHOLE FLOORS OF 900 SQM

100 William Street is located on the western side of William Street between Palmer and Crown Streets in East Sydney/Woolloomooloo. Bus at door, or short walk to either Kings Cross, Museum or Town Hall Stations.

100 William Street is an instantly recognisable Sydney Landmark building, offering affordable commercial office space in-between East Sydney's bustling precinct and Sydney's CBD.

Ideally located close to all major transport routes, in particular the Eastern Distributor. A ten minute walk to the CBD, a choice of Railway Stations including St James, Museum and Kings Cross and all major bus routes, it is easily accessible via all modes of transport.

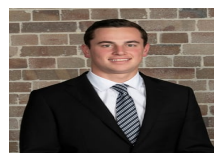
100 William Street offers various small office suites from 68sqm-415sqm and whole Level 1 of 700sqm with exclusive outdoor balcony. Refurbished or fitted out options available. The 24-floor building delivers outstanding views across Sydney's Botanical Gardens and CBD from the northern side

Price

\$725 PSQM GROSS

Property Details

Type	Commercial
Property Type	Offices
Area	435m2



Jackson Deans-Harvey
P : 0449 877 100
M : 0449 877 100
E : jackson@deansproperty.com.au

