



PRIME WATERFRONT WAREHOUSE OFFICE

Converted warehouse on the historic wharf, this absolute waterfront executive office suite embodies the heritage charm of the historic working wharf.

Soaring ceilings, exposed steel girders, floor to ceiling windows that open onto the massive 150sqm deck revealing breathtaking water and Sydney harbor views.

Designer fit-out includes a large glass enclosed conference room, soaring two-story open plan workspace, large client entertainment "café" area with a fully equipped bar and mini kitchen, several private offices with harbour views.

This waterfront suite features:

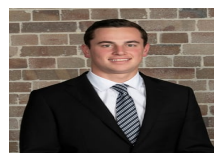
- *Absolute Waterfront with stunning Harbour views
- *Client lounge and entertainment café
- *Executive conference room
- *Designer fit-out

Price

Contact Agent

Property Details

Type	Commercial
Property Type	Offices
Area	165m2



Jackson Deans-Harvey
P : 0449 877 100
M : 0449 877 100
E : jackson@deansproperty.com.au



Boe Saysouthinh
P : 0425 484 222
M : 0425 484 222
E : bsaysouthinh@deansproperty.com.au

