

HARCOURT BUSINESS PARK

Harcourt Business Park is one of South Sydney's premier industrial estates, offering high quality warehouse and office space with showroom potential. The estate is situated within a well presented and landscaped estate with generous parking allocations and is accessed via Botany Road, Harcourt Parade or Dunning Avenue.

Features include:

- Office: 191sqm + Warehouse: 438sqm = 629sqm
- Access via Harcourt Parade or Dunning Avenue
- Excellent truck access
- Container height roller shutters
- Air-conditioned and carpeted office on ground and first floors
- Generous parking allocations

For more information or to inspect this property, feel free to give Deans Property a call today!

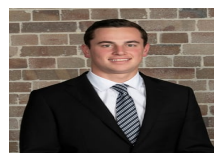
For more property matches, visit www.deansproperty.com.au

Price

Contact Agent

Property Details

Type	Commercial
Property Type	Industrial
Area	629m2



Jackson Deans-Harvey
P : 0449 877 100
M : 0449 877 100
E : jackson@deansproperty.com.au



Boe Saysouthinh
P : 0425 484 222
M : 0425 484 222
E : bsaysouthinh@deansproperty.com.au

