



ROSEBERY ENGINE YARDS

Rosebery Engine Yards marks a rare opportunity for those with big ideas and even bigger ambition. Welcome to an exciting adaptive reuse development that pays homage to the past and looks boldly towards the future.

Features include:

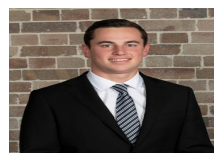
- Contemporary office, showroom, and food and beverage spaces from 400-8,000 sqm
- Reclaimed and repurposed heritage and industrial features
- Flexible breakout spaces
- Beautiful landscaped interior features
- Flooded with natural light through the sawtooth roof and skylights
- Premium amenity and end of trip facilities
- On-site food and beverage and childcare services
- Rooftop solar and on-site electric vehicle charging
- Targeting 5-star Green Star Design and As Built v1.3 rating
- Available November 2023

Price

Contact Agent

Property Details

Type	Commercial
Property Type	Industrial
Area	159m2



Jackson Deans-Harvey
P : 0449 877 100
M : 0449 877 100
E : jackson@deansproperty.com.au



Boe Saysouthinh
P : 0425 484 222
M : 0425 484 222
E : bsaysouthinh@deansproperty.com.au

