



## ROSEHILL INDUSTRIAL ESTATE

Rosehill Industrial Estate is located in the geographical centre of Sydney with convenient access to the M4 Motorway, M8 Motorway and Parramatta Road. Zoned IN3 Heavy Industrial, the estate is ideal for a range of uses including warehouse, distribution and manufacturing.

### Features:

- Warehouse options from 8,865-30,580 sqm
- Ample on-site parking
- Solar panels up to 450kW
- Combination of docks and on-grade doors
- Ample circulation space.

For any more information or if you would like to inspect this property, feel free to give Deans Property a call today!

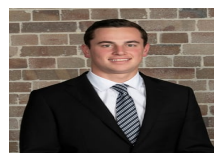
For more property matches, visit [www.deansproperty.com.au](http://www.deansproperty.com.au)

### Price

Contact Agent

### Property Details

Type	Commercial
Property Type	Industrial
Area	8865m2



Jackson Deans-Harvey  
P : 0449 877 100  
M : 0449 877 100  
E : [jackson@deansproperty.com.au](mailto:jackson@deansproperty.com.au)



Boe Saysouthinh  
P : 0425 484 222  
M : 0425 484 222  
E : [bsaysouthinh@deansproperty.com.au](mailto:bsaysouthinh@deansproperty.com.au)

