



PRICED TO LEASE - PLUG & PLAY SOLUTION

Offering a rare fully fitted half floor in East Sydney's most prominent building - 100 William Street. With significant professional building upgrades including 12 lifts, upgraded EOT, concierge reception, on-site barista café & 24/7 building security, this exciting city fringe asset is a great cost effective office solution.

Features include:

- 402.70 sqm half floor offering with plug & play fit-out options
- Cost effective sub-lease opportunity with additional whole floor possibility (885 sqm)
- Excellent natural light with stunning district/CBD skyline views over three sides
- Spacious layout with reception, boardroom & open plan working suitable for 40+ staff
- Bustling location with Stanley Street district just minutes away
- Ample secure parking available onsite

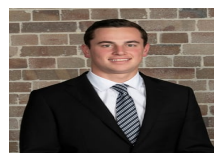
Note, quoted rental is an "Effective" amount, meaning after Incentive.

Price

\$399 P/Sqm Gross Effective

Property Details

Type	Commercial
Property Type	Offices
Area	402.7m2



Jackson Deans-Harvey
P : 0449 877 100
M : 0449 877 100
E : jackson@deansproperty.com.au

