



## BEAUTIFULLY RENOVATED SECURE OFFICES

185 Elizabeth Street is located next to the Sheraton on the Park and Hyde Park, close to David Jones and the Supreme Court with immaculate thoroughfare through to Castlereagh Street. Features a prestigious building foyer for first impressions and on-site building management.

#### Features include:

- 23.13 sqm office space
- Renovated - Synagogue
- Some natural light
- Lease terms from 6 months are available
- Onsite management office
- No reception area
- Business Centre Services are available including telephone answering services, typing, photocopying, scanning, faxing, couriers etc.

For more information or to inspect this property, feel free to give Deans Property a call today!

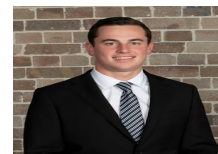
For more property matches, visit [www.deansproperty.com.au](http://www.deansproperty.com.au)

#### Price

\$2,717.78 + GST Per Month

#### Property Details

Type	Commercial
Property Type	Offices
Area	23.13m2



Jackson Deans-Harvey

P : 0449 877 100

M : 0449 877 100

E : [jackson@deansproperty.com.au](mailto:jackson@deansproperty.com.au)



Boe Sayoutinh

P : 0425 484 222

M : 0425 484 222

E : [bsayoutinh@deansproperty.com.au](mailto:bsayoutinh@deansproperty.com.au)

